

HL-G2 Herringbone Structure Milking Parlor for 300 Cows with CE ISO SGS FDA Certification

Our Product Introduction

for more products please visit us on mobilemilkingmachine.com

Basic Information

- Minimum Order Quantity: 16
- Price: 1700

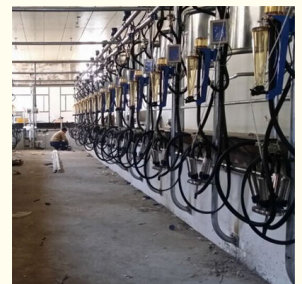
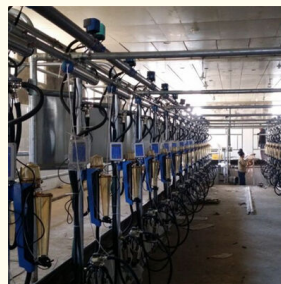


Product Specification

- Model NO.: HL-G2
- Type: Waikato Milk Meter
- Structure: Herringbone
- Voltage: 380V/50Hz(three Phase)
- Power: 4kw
- Milking Unit: Upon The Milking Place
- Pulsation Frequency: 60:40(adjustable) For Cows
- Milking Parlor Structure: Herringbone
- Component: Shed Frame, Cleaning System, Electronic Control System, Vacuum Pump System, Milk Receiver System, Milking Control System
- Layout: From 2x4 To 2x32 Or More As Request
- Production Capacity: 100 Sets/Month
- Auto Cup Remover: Yes
- Auto Split Meter: Yes
- Auto Electronic Meter: Yes



More Images



Product Description

HL-G2 Milking Parlor for Sale for 300 Cows

Applications of Automatic Cow Milking Machine System , Milking Parlor:

This Automatic Milking System , Milking Parlor With Waikato Meter is used to milk many cows/goats at one time.

Specifications of Automatic Cow Milking Machine System , Milking Parlor:

Model Number	HL-G2
Item	Milking Parlor For Sale
Component	Shed Frame, Cleaning System, Electronic Control System, Vacuum Pump System, Milk Receiver System, Milking Control System
Voltage	380V/50Hz(three phase)
Power	4kw
Milking Unit	Upon the milking place
Milking Place	Upon request
Pulsation frequency	60:40(adjustable) for cows
Milking Parlor Structure	Herringbone

Short Introduction of Automatic Cow Milking Machine System , Milking Parlor:

1. Model: Automatic Cow Milking Machine System , Milking Parlor
2. Model Number: HL-G2
3. Voltage: 380V / 50Hz(depends on clients)
4. Useage: Cows
5. Layout: from 2x4 to 2x32 or more as request

Features of Automatic Cow Milking Machine System , Milking Parlor:

- A. The most utilized parlor installation stall work to date is the Herringbone parlor, so named because of the linear layout and angle of the stalls mimicking the shape of the backbone of the Herring. Greenock produces the Herringbone parlor steel work in a variety of sizes and angles to suit the preference of the customer.
- B. Automatic cup remover
- C. Auto split type measuring & milk flow meter
- D. Auto electronic massage

Description of Automatic Cow Milking Machine System , Milking Parlor:

Automatic Cow Milking Machine System , Milking Parlor is a system that could be used to milk cows / goats in a large quantity at the same time. The layout could be designed from 2x4 to 2x32 or more as customer's request. With milk flow meter and ACR system, this kind of milking parlor is more widely used all around the world. also with accurate calibraton and proportional measurement, this parallel milking parlor become more and more popular.

Competitive Advantage of Automatic Cow Milking Machine System , Milking Parlor:

1. With ISO9001:2000, ISO9001:2008 certificate
2. With good quality and reasonable price
3. With all lifelong technical support.
4. Engineers overseas available to install the parlor and train the workers.

How to order our Milking Parlor:

- 1.Consultation to make details clear with us;
- 2.You place order with us;
- 3.We make proforma invocie for you;
- 4.You make the payment or deposit;
- 5.We begain manufacturing for you and send you equipments by sea or by air when we finish;
- 6.We send our our enginners to your farm for installation and train if you need;



Contact us:

HAILIAN PACKAGING EQUIPMENT CO., LTD
ZHANGJIAGANG CHUANGPU MACHINERY CO.,LTD

Att: Mr. Savior Chen

Website: www.dairymachinery.cc