

HL-MP26A Milking Cluster Group Essential Equipment for Dairy Farm Milking Efficiency

Our Product Introduction

more products please visit us on mobilemilkingmachine.com

Basic Information

- Place of Origin: China
- Brand Name: Chuangpu
- Model Number: HL-MP26A
- Minimum Order Quantity: One Set
- Price: Negotiable
- Packaging Details: Carton
- Delivery Time: 7-10 working days
- Payment Terms: T/T, Western Union,
- Supply Ability: 500SETS/Month



Product Specification

- Cluster Liner Material: Rubber/Silicone
- Consists Of: Milk Claw, Milk Liner, Milk Shell , Short Pulse Tube And Other Parts
- Suitable For: Pistion Pump Milking Machine Parts
- Name: Cow Milking Cluster Group
- Used For: Dairy Farm Milking Parts
- Model: HL-MP26A
- Shell Model: Stainless Steel 201
- Milk Claw: Iron Milk Claw
- Highlight: **Dairy Farm Milking Cluster Group, Milking machine Cluster Group, high Efficienc Milking Cluster Group**



More Images



Product Description

Corporate HQ: [CHUANGPU ANIMAL HUSBANDRY TECHNOLOGY\(SUZHOU\) CO.,LTD](#)

Export Dept: [HAILIAN PACKAGING EQUIPMENT CO., LTD](#)

Branch: [Sichuan Gene Haven Animal Husbandry Technology Co.Ltd](#)

EMAIL: nancyzd68@gmail.com
sales2@dairymachinery.cc

MOBILE: +86 133 0156 9240(Wechat/WhatsApp)

OFFICE: +86 512 5890 5953

Product Description:

The Cow Milking Cluster Group is a vital component of any dairy farm's milk collection system, designed to efficiently and hygienically extract milk from cows. This product, featuring the model name HL-MP26A, boasts high-quality construction with cluster shell material made of durable stainless steel for long-lasting performance.

One of the key components of this cow milking apparatus is the cluster liner, which is made of rubber/silicone to ensure gentle and effective milking process. The combination of stainless steel cluster shell and rubber/silicone cluster liner makes this milking cluster group a reliable and efficient tool for dairy farmers.

The Cow Milking Cluster Group consists of essential parts such as the milk claw, milk liner, milk shell, short pulse tube, and other components necessary for seamless milk collection. The milk claw is responsible for attaching to the cow's udder, while the milk liner and shell work together to extract milk efficiently.

With its durable stainless steel construction and high-quality rubber/silicone liner, this milking cluster group is designed to withstand the rigors of daily milking operations. Farmers can rely on this product to consistently and effectively collect milk from their cows, contributing to the overall efficiency of their dairy farm.

Investing in a reliable milk collection system is crucial for dairy farmers looking to optimize their milk production process. The Cow Milking Cluster Group offers a dependable solution for extracting milk from cows with ease and efficiency. Its durable construction and high-quality materials make it a valuable addition to any dairy farm's milking equipment.

Features:

Product Name: Milking Cluster Group

Consists of:

Milk Claw

Milk Liner

Milk Shell

Short Pulse Tube

Other Parts

Suitable For: Piston Pump Milking Machine Parts

Name: Cow Milking Cluster Group

Milk Claw: Iron Milk Claw

Liner Model: Short Milk Liner 230

Technical Parameters:

Milk Claw	Iron Milk Claw
Shell Model	Stainless Steel 201
Consists of	Milk Claw, Milk Liner, Milk Shell, Short Pulse Tube And Other Parts
Cluster Shell Material	Stainless Steel
Animal	Cow
Cluster Liner Material	Rubber/Silicone
Name	Cow Milking Cluster Group
Model	HL-MP26A
Suitable For	Piston Pump Milking Machine Parts
Used For	Dairy Farm Milking Parts

Applications:

The Chuangpu Milking Cluster Group, model HL-MP26A, is a versatile dairy milking device designed for efficient cow milking operations...

Originating from China, this milking cluster group is equipped with an iron milk claw, ensuring durability and reliability during milking sessions.

The product consists of essential components such as the milk claw, milk liner, milk shell, short pulse tube, and other necessary parts, all contributing to a seamless milking process. The short milk liner 230 model further enhances the performance of the Chuangpu HL-MP26A, specifically tailored for cow milking.

With its sturdy construction and reliable components, the Chuangpu Milking Cluster Group is suitable for various milking application occasions and scenarios. Farmers can effectively utilize this cow milking apparatus in dairy farms, livestock facilities, and agricultural settings.

Whether used for small-scale dairy operations or large commercial farms, the HL-MP26A model offers consistent and efficient milking performance, ensuring the well-being of the animals and the productivity of the milking process. Its versatility and compatibility with cows make it a valuable asset for dairy farmers seeking a reliable milking solution.

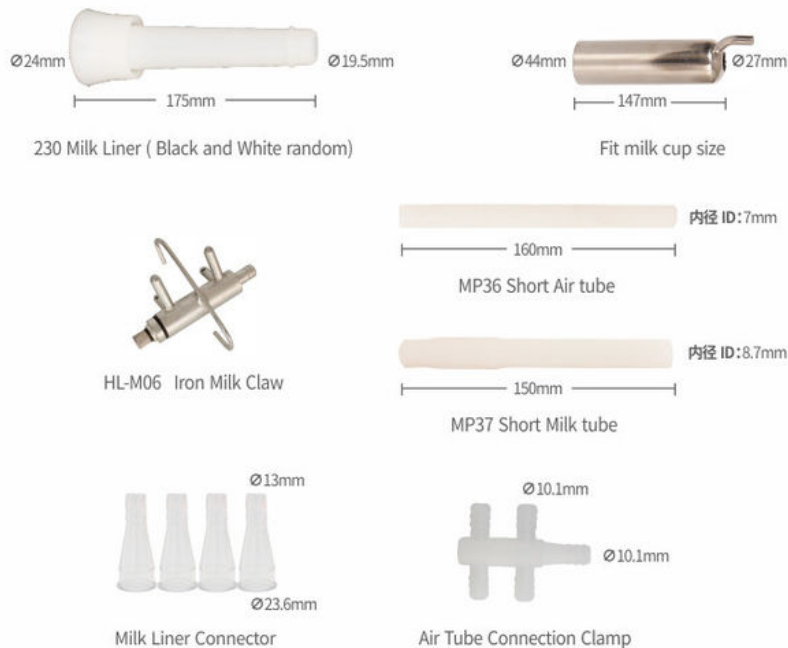
Designed to streamline the milking process and optimize milk production, the Chuangpu Milking Cluster Group is a practical choice for dairy farmers looking to enhance their milking operations. Its iron milk claw and high-quality components make it a durable and efficient milking collector group, suitable for a wide range of milking scenarios.



HL-MP26A Milk Cluster Group:

- | | |
|----------------------------|-----------------------------|
| MP36 Short Air tube*4 | Iron Milk Claw*1 |
| MP37 Short Milk tube*4 | Milk Liner Connector*4 |
| Stainless Steel Milk Cup*4 | Air Tube Connection Clamp*1 |
| 230 Short Milk Liner*4 | |

Component Parameters



Hailian Packaging Equipment Co.,Ltd

☎ 0086 13301569240

✉ sales2@dairymachinery.cc

🌐 mobilemilkingmachine.com

Nanzhuang Village, Economic Development Zone, Yangshe Twon, Zhangjiagang City, China